

Green Hostels Audit Report

GAULVERJASKÓLI

Alta ehf

May 2013





AUDIT REPORT: GAULVERJASKÓLI HOSTEL

This audit for Reyðarfjörður Hostel was conducted by Alta Consulting in May 2013. The audit report is based on a format from Hosteling International Iceland (HI Iceland).

Since 2003 HI Iceland has included environmental and social aspects in the organization's Quality Standards. All HI Iceland hostels must fulfill the General Quality Standards which include mandatory environmental requirements. Furthermore hostels can apply for a Green Hostel certification ("home-made" additional environmental criteria). The Green Hostel certification is based on environmental requirements set out by HI Iceland, with support from an independent consulting agency which audits the hostels.

Today there are 10 Green hostels at HI Iceland. Gaulverjaskóli Hostel has applied for the Green Hostel certification. The hostel is a renovated old school south of Iceland and consists of two houses; a) The main house with eight rooms and a common area where the breakfast is served and b) Kitchen house which is one big dining area and a self-catering kitchen. The dinner is served in the Kitchen house. Gaulverjaskóli Hostel is making a clear effort to work in a sustainable way by reusing, recycling and offering various local foods.

Structure of the report

Each subject is divided into 2 categories according to the HI Iceland system:

- a. Mandatory sustainability requirements that are part of the HI Iceland General Quality Standards which every HI Iceland hostel must fulfil, and
- b. Extra requirements that every hostel interested in obtaining the Green Hostel certification must match in addition to the mandatory requirements*

The 1st column represents the **Criteria**, both in Icelandic and English.

The 2nd column, named **Status** represents the hostel's situation for each point:

✓ = *Fulfilled* ✗ = *Not achieved*

The 3rd column, ALTA Audit Comments: Alta's observations on a visit in May 2013.



1. CONSUMPTION

1.1. Mandatory requirements

	Status	ALTA Audit Comments
<p>1.1.1. Í gestaeldhúsum og í matsölum skal einungis boðið upp á margnota borðbúnað. In the guest kitchens and when making own food there should only be offered reusable tableware.</p>	✓	The hostel is only using reusable tableware.
<p>1.1.2. Við reksturinn skal forðast óþarfa soun á umbúðum með því að velja frekar stærri einingar, t.d. ekki að velja vörur í "smáumbúðum" (s.s. smjör, marmelaði, sykur, sápur). In the management it should be avoided to generate unnecessary waste from packaging by choosing bigger units e.g. not choose products in "retail packaging" (i.e. butter, marmalade, sugar, soaps).</p>	✓	<p>The hostel is making a clear effort to buy in bulks and reduce unnecessary waste from packaging when buying new products.</p> <p>E.g. Buckets from marmalade are reused, the soap containers are refilled. In the visit it was obvious that the manager is inventive and economical.</p>
<p>1.1.3. Velja skal umhverfismerкта rekstrarvöru umfram aðra sem er í boði. Þetta á t.d. við um val á hreingerningurvörum s.s. einnota pappír; klósettpappír og handþurrkum. Environmental friendly products should be chosen rather than other. This applies to selections of e.g. Cleaning products; material and equipments. Disposable paper; toilet paper and hand wipers.</p>	✓	<p>Eco-labelled products: Toilet paper, wipes, cleaning products and hand soap.</p> <p>Note: Cleaning products that were not eco-labelled had been left behind by guests.</p>
<p>1.1.4. Gestum eru veittar upplýsingar um gæði íslenska vatnsins um leið og þeir eru hvattir til vatnsdrykkju. Merking til þessa er til hjá Farfoglum. Guests are informed about the quality of the Icelandic water and are generally encouraged to drink water.</p>	✓	Information about Icelandic water is available in the dining room.
<p>1.1.5. Þar sem morgunverður er í boði er vatn á morgunverðarborðinu. If breakfast is available, water is offered.</p>	✓	The hostel offers water at the breakfast table.



1.2.Extra requirements for the Green Hostels

	Status	ALTA Audit Comments
<p>1.2.1.Leitast er við í innkaupum á matvöru og ekstravörum að velja íslenska umhverfisvæna vöru framyfir erlenda, a.m.k. séu 3 vörur sem sýna þetta. Sjá tillögur Farfugla að innkaupalista.</p> <p>When shopping it is preferred e.g. for cooking to buy Icelandic products and shop within the district. At least 3 products should confirm this. See recommendations for HI Hostels.</p>		<p>The hostel makes an effort to buy Icelandic products. E.g. Eggs, tomatoes, bread, cucumbers, butter, milk. Sometimes, flatbread and rye bread.</p>
<p>1.2.2. Þar sem seldur er morgunverður er boðið upp á a.m.k. þrjár tegundir af heimagerðri/ heimaræktaðri/ lífrænt ræktaðri matvöru á morgunverðarborðinu, s.s. brauð, ávexti, grænmeti og te. Sýnt er fram á þetta með matseðli. Einnig má sjá tillögur Farfugla að innkaupalista.</p> <p>If breakfast is offered, the selection should contain at least three types of homemade/ home-grown /organically grown food products, like bread, fruit, vegetable, tea, etc. This is demonstrated with a menu. See a suggestions to a shopping list for HI Hostels.</p>		<p>The owner makes her own marmalade, jam and meat soup. Sometimes the owner allows the guests to taste milk straight from the farmer close by.</p> <p>The hostel informs the guests about the breakfast selection, with a focus on the Icelandic, organic and homemade products. This is done via leaflet at the breakfast table.</p>



2. REUSING AND RECYCLING

2.1 Mandatory requirements

	Status	ALTA Audit Comments on site
<p>2.1.1. Reynt skal eins og kostur er að versla vistvænt og draga um leið úr sorpmagni með því að:</p> <ul style="list-style-type: none"> • velja fjölnota vörur í stað einnota • velja endurunnið eða endurnýtanlegt • flokka úrganginn með því að skila til endurnýtingar öllu sem farvegur er fyrir <p>When shopping an attempt should be made to buy environmental friendly products and by doing that decrease the amount of waste. This can be done by:</p> <ul style="list-style-type: none"> • choosing reusable products instead of disposable • choose recycled products and ones that can be recycled • sort waste and returning everything that can be recycled to recycling centres 	✓	<p>The hostel is creative in reusing things and sorting waste. E.g. no disposables, furniture and flowers are second hand (beside the beds), using maize bags for organic waste.</p>
<p>2.1.2. Skýrar leiðbeiningar verða að hanga uppi handa gestum til að fara eftir við flokkun á sorpi. Merkingar fyrir sorpflokkun eru til hjá Farfluglum og viðeigandi merkingar skulu vera þar sem þær gera flokkun augljósa fyrir gesti. Clear instructions must be provided for guests to follow while sorting waste. The signs for waste classification are from Farfluglar and they are properly displayed offering a clear classification for guests.</p>	✓	<p>The hostel has 8 categories of waste. In the kitchen house there are signed bins for each category.</p> <p>The hostel shows a clear overview of how the waste is be sorted in the Kitchen house.</p>
<p>2.1.3. Starfsfólki eru kynntar vinnureglur um losun og meðhöndlun á sorpi. Staff is trained about disposal and handling of waste.</p>	✓	<p>The owner is the only employee. Note that if the hostel hires additional employees it's important to inform them about the disposal and handling of waste.</p>
<p>2.1.4. Að minnsta kosti skal flokka eftirfarandi og skila/farga/vinna</p> <ul style="list-style-type: none"> • Gos- og drykkjarumbúðir sem gefa skilagjald 	✓	<p>The hostel has 8 categories of waste. In the kitchen house there are signed bins for each category. All categories in criteria 2.1.4 are</p>



<ul style="list-style-type: none"> • Rafhlöður – skilist á bensínstöðvum um allt land • Lífrænn úrgangur sem til fellur í eldhúsi og garðúrgangur sem nýtanlegur er flokkaður er frá og nýttur t.d. til moltugerðar eða handa dýrum • Lyf skilist í apótekum þar sem þeim er komið í eyðingu <p>At least the following should be sorted and returned/disposed/reused;</p> <ul style="list-style-type: none"> • Soda and drinking cans and bottles can be reimbursed • Batteries – returned to Gas stations all over the country • Organic waste from the kitchen and garden waste – which can be used for making compost • Medicine – returned to pharmacies where they are disposed of 		sorted at Gaulverjaskóli.
<p>2.1.5. Notaðir bæklingar sem safnast frá gestum er haldið til haga svo lengi sem þeir eru heillegir og geta orðið öðrum til gagns. Used brochures collected from visitors are maintained as long as they have full properties and can be useful to others.</p>	✓	The hostel fulfils this point. Used brochures are collected and offered in the hall way.
<p>2.1.6. Gestir eru hvattir til þess að skilja þurrvöru; krydd, og aðra heillega matvöru eftir handa öðrum gestum í gestaeldhúsunum í stað þess að henda. Merkingar til þessa er hægt að fá hjá Farfluglum. Gert er ráð fyrir plássi fyrir sameiginlega matvöru og hirt vel um í þrifum.</p> <p>Guests are encouraged to leave dry goods; spices, and other food products for other guests to use in the guest kitchens instead of throwing it away. Labels for this can be obtained from Farfluglar. It is assumed the space for common food is regularly checked and cleaned.</p>	✓	The hostel has special place, clearly signed, in a shelf in the kitchen
<p>2.1.7. Bækur og tímarit sem verða eftir er safnað í bókasafn staðarins</p> <p>Reading material that is left behind is gathered for the hostels' library.</p>	✓	The guests can take/swap the reading material. In the Kitchen house there are signed shelves for is.



2.2 Extra requirements for Green Hostels

	Status	ALTA Audit Comments
<p>2.2.1. Hver og einn neðantalinn sorpflokka (eða sambærilegra) gefur einn punkt ef þeir eru flokkaðir frá og þeim skilað á viðurkenndan hátt</p> <ul style="list-style-type: none">• Bylgjupappi,• Dagblöð og tímarit,• Fernur utan af drykkjarvörum, mjólk og safa• Spilliefni, þar á meðal; málning, lakk og leysiefni, gas og spritt, lyf, olíufeni <p>Each of the following garbage groups (or other comparables) give one point each if they are divided from other garbage and they are returned properly.</p> <ul style="list-style-type: none">• Cardboard,• Newspaper and magazines• Milk and juice containers• Toxic substances, including paint, varnish and solvent, gas and spirit, oil		<p>The hostel has 8 categories of waste. In the kitchen house there are signed bins for each category. All categories in criteria 2.2.1 are sorted at Gaulverjaskóli.</p>
<p>2.2.2. Skiptimarkaður með föt og búnað er í húsinu og/ eða fatnaður og skór er gefinn til Hjálparstofnanna. Merking til að hvetja gesti til að skilja eftir nýtilega hluti er til hjá Farfluglum.</p> <p>Red Cross/Free items basket with clothing is available in the house and/or shoes and clothes are donated to the Red Cross. A label to encourage visitors to leave unnecessary clothes exists in Farfluglar.</p>		<p>There are two empty shelves in the Kitchen house for clothes/shoes available for other guests to use.</p>



3. POLLUTION

3.1. Mandatory requirements

	Status	ALTA Audit Comments
<p>3.1.1. Þvottaefni í þvottavélar er notað sparlega og samkvæmt ákveðnum leiðbeiningum; leiðbeiningar til gesta skulu vera við þvottaaðstöðu. Merking til að leiðbeina gestum er til hjá Farfuglum. Starfsfólk skal fá leiðbeiningar um notkun á þvottaefni.</p> <p>Detergent in the washing machine is used sparingly and according to established guidelines; instructions to visitors shall be near the washing machine. A label to guide visitors is available at Farfuglar. Employees should be instructed on the correct use of detergent.</p>	✓	The hostels owner handles all washing. Even so is it recommended to have clear instructions for guests and future employees.
<p>3.1.2. Við val á efnum við viðhald byggingar og innanstokksmuna, s.s. málningu, gólfefni, er leitast við að nota viðurkennd vistvæn efni á réttan hátt. Haft skal samráð við skrifstofu Farfugla um val á efni.</p> <p>When choosing material to reconstruct buildings and interior, e.g. paint, floor material it is endeavoured to use acknowledged environmental friendly material in the proper way. The office of Borgartun shall be consulted when choosing materials.</p>	✓	<p>The hostel reuses old furniture.</p> <p>Note: When going through cans of paint it was clear that new paint had been bought that was not eco-labelled. The hostel should use eco-labelled building materials when ever possible (varnish, paint, floor etc.).</p>
<p>3.1.3. Eiturefni/sterk óvistvæn efni má ekki nota til daglegra þrifa eða annarar reglulegrar starfsemi. Starfsfólk fái leiðbeiningar um meðferð og geymslu.</p> <p>Toxins / strong material s may not be used for daily cleaning or other ordinary operations. Employees will receive instructions for handling and storage.</p>	✓	The hostel fulfils this point.
<p>3.1.4. Þar sem eru sorptunnur útvið verða þær að rúma það sorp sem til fellur, vera</p>	✓	The hostel fulfils this point.




<p>losaðar og þrífnað reglulega. Stubbahús eða rusl fyrir sígarettustubba séu á viðeigandi stöðum.</p> <p>Waste bins must accommodate the waste that is generated, they are checked and cleaned regularly. Appropriate containers for cigarette stubs are in specific places.</p>		
<p>3.1.5. Sorptunnur innanhúss verða að rúma það sopp sem til fellur, vel staðsettar, losaðar reglulega og þrífnað.</p> <p>All garbage bins inside are well located. They shall be emptied and cleaned regularly.</p>	✓	The hostel fulfils this point.
<p>3.1.6. Reykingar eru með öllu bannaðar innandyra. Merkingar eru til hjá Farfuglum.</p> <p>Smoking is strictly forbidden inside the house. Labels are available at Farfuglar.</p>	✓	The hostel fulfils this point.

3.2. Extra requirements for Green Hostels

<p>3.2.1. Klósettilmsteinn er ekki notaður – nema umhverfisvottaður. Sjá tillögur Farfugla að innkaupalista.</p> <p>If a toilet refresher is used it must be “environmental friendly”. See recommendations for shopping.</p>	✓	The hostel does not use toilet refresher.
<p>3.2.2. Þvottaefni fyrir allt tau, uppþvottalögur og uppþvottaefni í vélar er umhverfisvottað. Sjá tillögur Farfugla að innkaupalista.</p> <p>Washing powder for all clothes, hand washing detergent and dishwashing detergent must be ‘environmental friendly’. See recommendations for shopping.</p>	✓	<p>The is now dishwashing machine at Gaulverjaskóli.</p> <p>Note: By the washing machine was both eco-labelled washing powder and one that was not (owner, privat use). The washing machine serves both the hostel as well as the owner (privat). The owner chooses not use eco-labelled detergents for her own use. Alta stresses the importance of always using eco-labelled washing powder (and other cleaning detergents) for the hostel.</p>
<p>3.2.3. A.m.k. 80% þeirra hreinlætisvara sem notaðar eru við dagleg þríf á heimilinu eru umhverfisvottaðar vörur, að meðtöldum</p>	✓	<p>The hostel is fulfilling this point.</p> <p>Recommended to add sign on the</p>



<p>Þvottaefnum. Sjá tillögur Farfugla að innkaupalista. At least 80% of cleaning products used for daily cleaning in the hostel are eco friendly, including detergents. See recommendations for shopping.</p>		hand soap.
<p>3.2.4. Við öll dagleg þrif er notaður búnaður og klútar sem þarfnast ekki kemískra hreinsiefna. Sjá tillögur Farfugla að innkaupalista. The equipment and clothes used for cleaning do not require chemical cleaning detergents. See recommendations for shopping.</p>		The hostel fulfils this point.



4. ENERGY & WATER

4.1. Mandatory requirements

	Status	ALTA Audit Comments
<p>4.1.1. Fylgst er með orkunotkun og notkun á vatni með það fyrir augum að halda yfirsýn og geta t.d. gripið inn í um leið og eitthvað fer úrskeiðis.</p> <p>Keep a log for energy usage and water usage so it is easier to keep an overview and to make it easier to react e.g. as soon if something goes wrong.</p>	✓	<p>The hostel is looking into its energy usage. There is no meter for water usage.</p> <p>Recommended to keep records of the energy usage every month.</p>
<p>4.1.2. Fylgjast verður vel með pípulögn og ofnakerfi hússins og sjá til þess að ójafnvægi í kerfum og bilanir/leki sé kippt í liðinn hið allra fyrsta.</p> <p>Plumbing and heating systems have to be monitored and made sure that imbalance in the systems and malfunctions/leakage is fixed immediately.</p>	✓	<p>The plumbing and heating system is checked regularly by the owner but no written comments are available (the owner is a plumber).</p>
<p>4.1.3. Skipt er út perum fyrir sparperur þar sem það er hægt. Perustæðum skipt út við viðhald.</p> <p>Regular light bulbs shall be exchanged with economic bulbs wherever that is possible.</p>	✓	<p>Every second fluorescent light bulb has been removed to save energy. When light bulbs stop working they are replaced with energy efficient.</p>
<p>4.1.4. Öll ný hreinlætistæki skulu valin með tilliti til endingar og orku/vatnssparnaðar og við endurnýjun skal þeim gömlu skipt út fyrir slík.</p> <p>All new sanitary equipments shall be chosen according to their durability and power/water saving and when renewing old equipments they shall be replaced by the above mentioned.</p>	✓	<p>The hostel claims that sanitary equipment are chosen according to durability and water saving.</p>
<p>4.1.5. Gestir eru hvattir til að spara orku með því að slökka ljós. Merking er til hjá Farfglum.</p> <p>Visitors are encouraged to save energy by</p>	✓	<p>Guests are reminded to turn of the light with signs.</p>



turning off lights. Labels available from Farfuglar.		
--	--	--


4.2. Extra requirements for Green Hostels

<p>4.2.1. Slökkt er á ljósum og tækjum eftir vinnu til að spara orku. Nefna skal þrjú dæmi við úttekt.</p> <p>Effort is made to turn off lights and machines/equipments after work to save power. Mention three examples of inventory</p>		The hostel fulfils this point and gives the examples off using heat pump, almost never uses lights outside and turns of the stove before the water is boiled.
<p>4.2.2. Sparperur eru notaðar í a.m.k. 40% ljósa í byggingunni</p> <p>Energy saving bulbs are used in at least 40% out of the building</p>		The hostel claims that this point is fulfilled. (The audit did not have any proof of the real ratio of economic bulbs at the hostels).
<p>4.2.3. Fylgst er með orkunotkun og notkun á vatni með það fyrir augum að halda yfirsýn og geta t.d. gripið inn í um leið og eitthvað fer úrskeiðis. Sýna fram á eftirlit með skráðum mælingum</p> <p>Keep a log for energy usage and water usage so it is easier to keep an overview and to make it easier to react e.g. as soon if something goes wrong. Show these documents</p>		This is fulfilled. No meter for water usage and working on registration off energy usage. Recommend to keep an overview of the energy usage even though discussions with the energy companies are still on going.




5. TRANSPORTATION

5.1. Mandatory requirements

<p>5.1.1. Veittar skulu skriflegar upplýsingar á viðeigandi stöðum um gönguleiðir og áhugaverða staði á svæðinu sem nálgast má fótgangandi/á hjóli.</p> <p>On site, information shall be provided for walking paths and interesting sightings that can be reached either by foot or bicycle.</p>		Printed information is available for guests in a folder, about activities, paths around, cultural info, services etc.
--	---	---

5.2. Extra requirements for Green Hostels

<p>5.1.2. Gestir eru hvattir til samaksturs og þeim hjálpað að skipuleggja það ef möguleiki gefst. T.d. er hægt að benda á síðuna samferda.net og hjálpa gestum að samnýta ferðir.</p> <p>Visitors are encouraged to walk and they are helped to organize their walk. For example you can tell them about samferda.net and help them share trips.</p>		Guests are encouraged to walk and they are assisted in planning their walks. Difficult area to organise shared car trips.
---	---	--



6. EXTERNAL SURROUNDINGS

6.1. Mandatory requirements

	Status	ALTA Audit Comments
<p>6.1.1. Beina skal gestum og öðrum vegfarendum um lóð og landareign inn á stíga, þannig að hlífa megi frekar jörð og viðkæmum gróðri.</p> <p>Guests and other pedestrians who use the premises shall be directed to paths so the ground and delicate vegetation can be protected.</p>		<p>The hostel fulfils this point. The hostel has printed material with the available paths in the area.</p>

6.2. Extra requirements for Green Hostels

<p>6.2.1. Notkun eiturfna, s.s. arfa- og illgresiseyðis er haldið í algjöru lágmarki. Sjá innkaupalista.</p> <p>The use of toxins, such as herbicides is kept to a minimum. See shopping list.</p>		<p>The hostel does not use any herbicides.</p>
--	--	--



7. ENVIRONMENTAL EDUCATION



7.1. Mandatory requirements

	Status	ALTA Audit Comments
<p>7.1.1. Umhverfisstefna Farfugla skal hanga uppi í almenningsrými sýnileg gestum og gangandi, á íslensku og ensku. Er til hjá Farfuglum.</p> <p>The Environmental policy should be hung up in public spaces, visible to visitors and guests, in Icelandic and in English. It is from Farfuglar.</p>	✓	The hostel fulfils this point.
<p>7.1.2. Öllu starfsfólki heimilisins er kynnt Umhverfisstefna Farfugla og þær kröfur sem Gæðastaðlarnir gera til rekstursins.</p> <p>The entire staff of the home is presented the Environmental Policy and requirements of Quality standards for the business.</p>	✓	The owner is the only one working at the hostel now.
<p>7.1.3. Kannað er viðhorf gesta með því að nota "your opinion" blöðin. Farið er yfir niðurstöður reglulega og brugðist við því sem þar kemur fram.</p> <p>Check the attitudes of visitors by using "your opinion" papers. Access the results regularly and respond to its effects.</p>	✓	The hostel fulfils this point. Recommended to encourage the guests to use the "your opinion" papers and send a summary off earlier submitted papers to HI.

7.2. Extra requirements for Green Hostels

<p>7.2.1. Til viðbótar við Umhverfisstefnu Farfugla er kynnt sérstök Umhverfisstefna viðkomandi heimilis</p> <p>As a supplement to Farfuglar's environmental policy, guests are presented with a special Environmental policy of the particular hostel in question</p>	✓	The hostel has a written environmental policy placed in the hallway.
<p>7.2.2. Kannað er viðhorf gesta með því að nota 'your opinion' blöðin. Farið er yfir</p>		The hostel fulfils this point, "your opinion" forms are available for



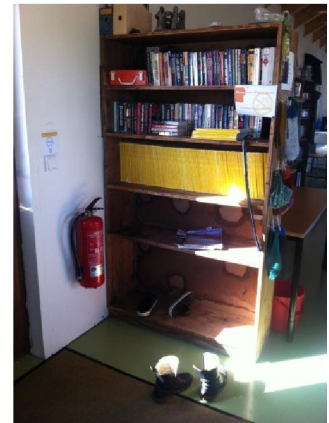
<p>niðurstöður reglulega og brugðist við því sem þar kemur fram. Unnið er úr upplýsingum frá gestum á skipulegan hátt og viðbrögð tekin fram í árlegri greinargerð til Farfugla.</p> <p>Examining attitudes reviews using, your opinion papers'. Crossing results periodically and respond to the material contained. Derived information from visitors in an orderly manner and the response made in the annual report for Farfugla.</p>		<p>guests.</p> <p>Recommended to send a yearly summary to HI Iceland.</p> <p>“your opinion” forms from 2012 show that guests are very happy about their stay at Gaulverjaskóli.</p>
<p>7.2.3. Gestgjafi og/eða starfsfólk á hans vegum hefur sótt námskeið um umhverfismál eða tekið þátt í verkefninu <i>Vistvernd í verki</i> á undanförunum tveimur árum. Námskeið er haldið reglulega á vegum Farfugla.</p> <p>Host and / or staff acting on his behalf has attended courses on environmental issues or participated in the project <i>Vistvernd</i> in the last two years. Courses kept regularly by Farfugla.</p>		<p>The owner is willing to teach/share her experience and good advice, but has not attended a course on environmental issues or participated in the project <i>Vistvernd</i> in the last two years.</p>



Green Hostels Audit Report – Reyðarfjörður



Pictures from audit visit May8, 2013



Pictures from Gaulverjaskóli May 21, 2013

